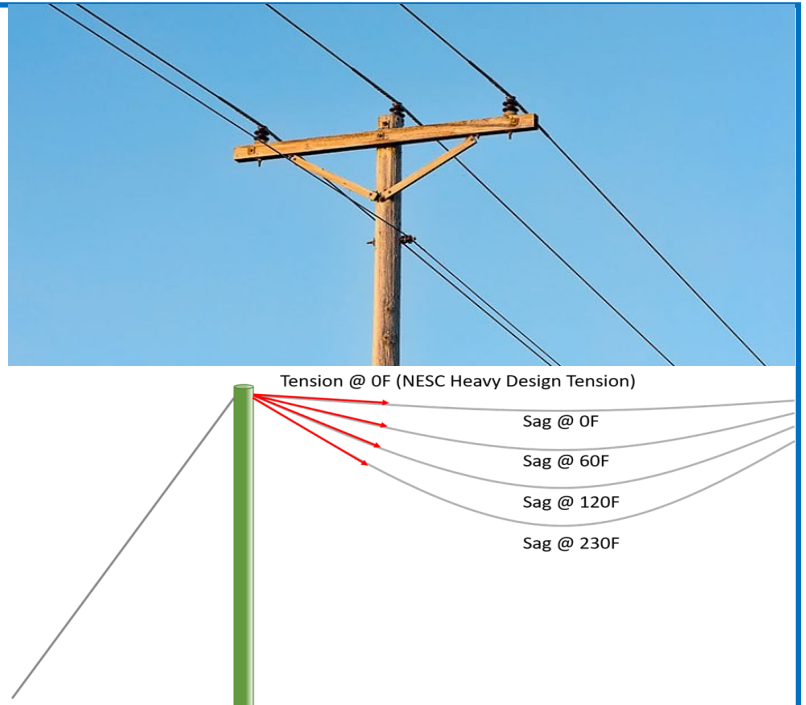


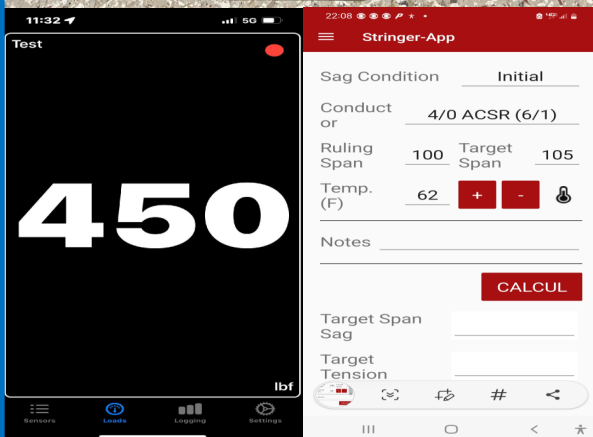
Build it as you designed it:

Do you want to improve:

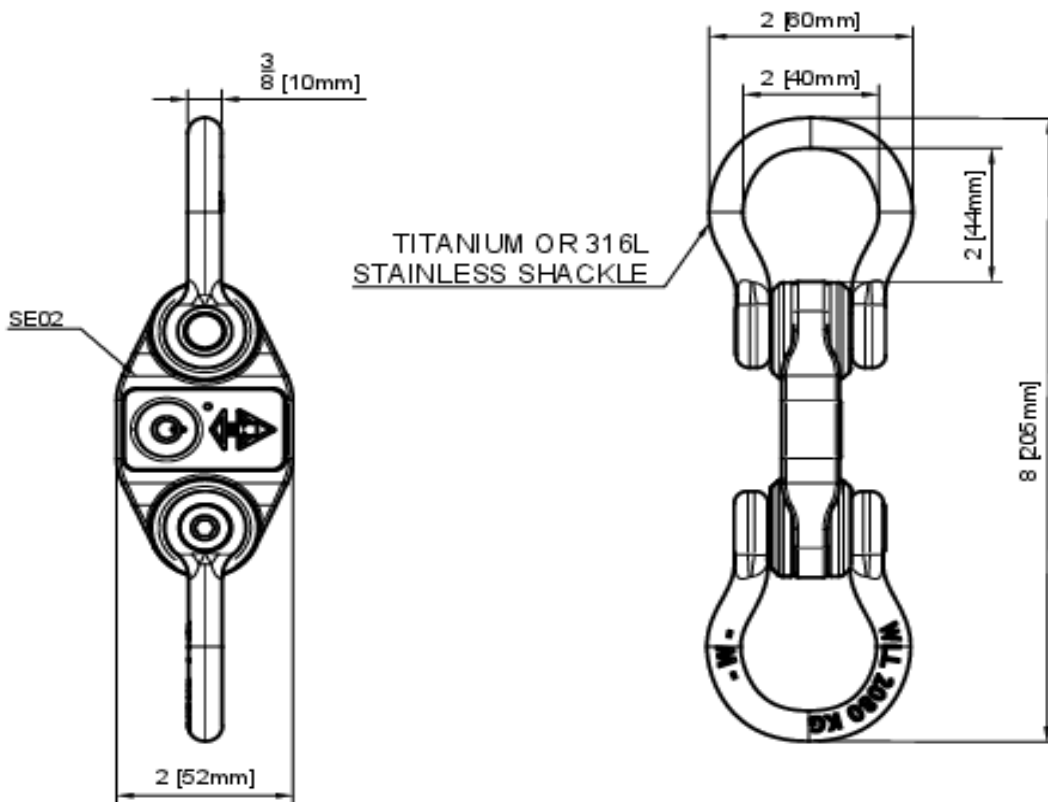
- 1st time right installation and repair
- Network reliability
- Network operational efficiency
- Improved public safety
- Minimize liability




- Space age technology
- Light-weight & compact
- Fast set up & simple to use
- Unmatched reliability and durability
- Automatic sag & tension information at the touch of a button
- Audible & visual live readings and alarms for hands free operation
- Capture images and records of live tensions
- Cloud storage for engineering access



450



SE02 CONFORMS TO FCC, CE

Part Number	SE02	1246	51246
Description	smartlink2 2tee	316L Stainless Shackle	Titanium Bow Shackle
Max Working Load	4400lb [2t]	4400lb [2t]	6170lb [2.8t]
Safety Factor	3xMWL	3xMWL	2.8xMWL
Breaking Load	13220lb [6t]	13220lb [6t]	17630lb [8t]
Weight	0.35lb [160g]	0.51lb [233g]	0.30lb [136g]
Batteries	LiPo		
Battery Life	2000h		
Temperature Range	-10 to 40°C		
IP Rating	IP67		
Accuracy	±1%		
Precision	±2.2lb [±1kg]		
Frequency Range	0.25 to 10Hz		

BLUEMAX USA 

Scale Format Sheet
1:1 A4 1/1

Project **Dynamometer**
Title **Shackle options**
Part **SE02**
Finish **Polished**

Drawn M/W Date 19/08/2022
Approved Date
Rev. Issue Date

Material
Ti (SE01, 51246), 316L Stainless, Acetal
Dimension: inch es [mm], de gree s
To be a no e un less state d. D. firm, D. P

© Copyright Maxima Limited. All rights reserved. Reproduction, use or distribution of this drawing may only be as authorized with the prior consent of Maxima Marine Limited. To be used.